

Mardovar litter due in February 2012

 <p>Sire Ch. Birnam Wood's Hoot Gibson OS SDHF BIS BISS BOW '06 GRCA Nat'I OFA GR-92549G24M-PI OFA GR-EL15637M24-PI OFA GR-CA11492/16M/C CERF GR-33528 OFA GR-DNA-1106/B CHIC#: 41625</p>	<p>Sire Am/Can.Ch. Calypso's Udderwise Alndon, Can BIS OFA GR-74048G26M OFA GR-EL6848M38 OFA GR-CA5659/40M/C CERF GR-25494 CHIC#: 12274</p>	<p>Sire Ch. Twin-Beau-D's Peterbuilt OS, SDHF, BIS, BISS OFA GR-60223F24M-T, CERF GR-15413</p>	<p>Am/Can.Ch. Pebwin Making the Odds OS JAM 1999 GRCA Nat'I OFA GR-59307F74M-T</p>
		<p>Dam Ch. Birnman Wood's Toad You So OD OFA GR-59776G30F-T, OFA GR-EL14282F12, OFA GR-CA6235/93F/C</p>	<p>Twin-Beau-D's Signet's Premiere OD OFA GR-40211F35F</p>
		<p>Sire Ch. Claircrest Nobody's Business OS OFA GR-51636G25M, CERF GR-13113</p>	<p>Ch. Lovejoy's Catchme If U CanCan Am/Can OS SDHF BIS BISS OFA GR-50482E24M, CERF 7/9/07</p>
		<p>Dam Ch. Wingate's Fast Getaway OFA GR-57007F24F-T, CERF GR-14286</p>	<p>Ch. Goodtimes Raining Comets OD WB '94 GRCA Nat'I OFA GR-47680G32F</p>
 <p>Dam Mardovar's Royal Trude OFA GR-100779G65 OFA GR-EL22221F65 OFA GR-CA19209/65F/C CERF GR-34993 CHIC#: 70881</p>	<p>Dam Ch. Birnman Wood's Take Center Stage OFA GR-75833G29F OFA GR-EL5960F29 OFA GR-CA4393/25F/S CERF GR-21716 CHIC#: 10014</p>	<p>Sire Ch. Asterling's Buster Keaton OS Can.SDHF OFA GR-23478F24M, CERF GR-4722/96-144</p>	<p>Ch. Carlin's Holiday A Xmas Carol OS OFA GR-37748G26M, OFA GR-EL1806-T</p>
		<p>Dam Ch. Claircrest Devilish Demeanor OFA GR-41207G26F, CERF GR-13111</p>	<p>Ch. Asterling's Buster Keaton OS Can.SDHF OFA GR-23478F24M, CERF GR-4722/96-144</p>
		<p>Sire Eng/Irish Ch. Erinderry Diamond Edge of Glenavis BVA hips 5:6, BVA eyes clear 10/01</p>	<p>Ch. Wayward's Walk This Way OFA GR-47531G33F</p>
		<p>Dam Eng.Sh.Ch. Colbar Royal Rhapsody JW BVA hips 7:7, BVA eyes</p>	<p>Eng/Irish Ch. Papeta Philosopher Crufts 1994 winner BVA hips 2:3, BVA eyes 11/97 clear</p>
<p>Dam Mardovar's Mitzva Melody OFA GR-73333G27F OFA GR-EL4899F27 CERF GR-EL4899F27</p>	<p>Sire Eng/Irish Ch. Erinderry Amber of Tyrol BVA hips 3:4, ECVO 9/00 eyes clear</p>	<p>Sire Am/Can.Ch. Mardovar's Go Furr Broke TT,CGC,OS OFA GR-19852G29M, OFA GR-CA4930/68M/S, CERF GR-10627/96-161</p>	<p>Eng.Ch. Paudell Easter Plantagenet at Kerrien BVA hips 4:3 BVA eyes 1/99 clear</p>
		<p>Dam Mardovar's Fireside Ceile Noel TT, CGC OFA GR-46938G24F, CERF GR-10750</p>	<p>Eng.Sh.Ch. Telkaro Royal Romance of Colbar BVA hips 16:13 BVA eyes 3/98 clear</p>
		<p>Sire Am.Can.Ch. Asterling's Buster Keaton OS Can.SDHF OFA GR-23478F24M, CERF GR-4722/96-144</p>	<p>Quillmark Mardovar's Mallard (8 CH pts, 2 mjrs) GR-34755G42F, GR-CA4934, CERF GR-1029</p>
		<p>Dam Mardovar's I'm So Glad OFA prelim hips, OFA GR-EL4901F79, CERF GR-EL901F79</p>	

Some family members:



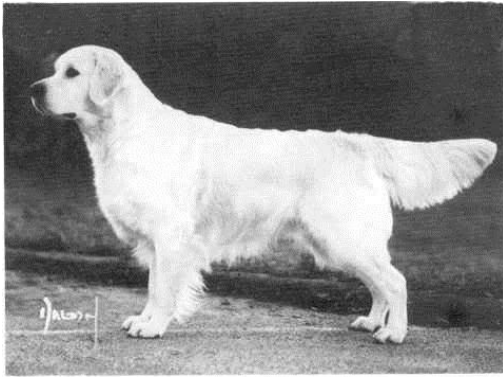
Ch.Erinderry Diamond Edge of Glenavis



Ch.Paudell Easter Plantagenet at Kerrien



Ch.Telkaro Royal Romance of Colbar



CH. & IRISH CH. PAPETA PHILOSOPHER



Irish Sh.Ch. Erinderry Amber of Tyrol



Eng.Sh.Ch.Colbar Royal Rhapsody JW



Ceile's Mardovar Caleb



Mardovar's Fireside Ceile Noel



Colbar Royal Coachman



Colbar Royal Coachman



Ch.Mardovar's Go Furr Broke OS



Ch.Birnam Wood's Toad You So OD



Ch.Birnam Wood's Hoot Gibson SDHF OS



Ch.Calypso Udderwise Aldnon



Ch.Birnam Wood's Take Center Stage



Ch.Twin-Beau-D's Peterbuilt SDHF OS



Ch.Pebwin Making the Odds OS



Ch.Lovejoy's Catch Me If U CanCan SDHF OS



Ch.Claircrest Nobody's Business OS



Ch.Wingate's Fast Getaway



Ch.Goodtimes Raining Comets OD



Ch.Carlin's Holiday A Xmas Carol OS



Ch.Wayward's Walk This Way



Ch.Asterling's Buster Keaton OS